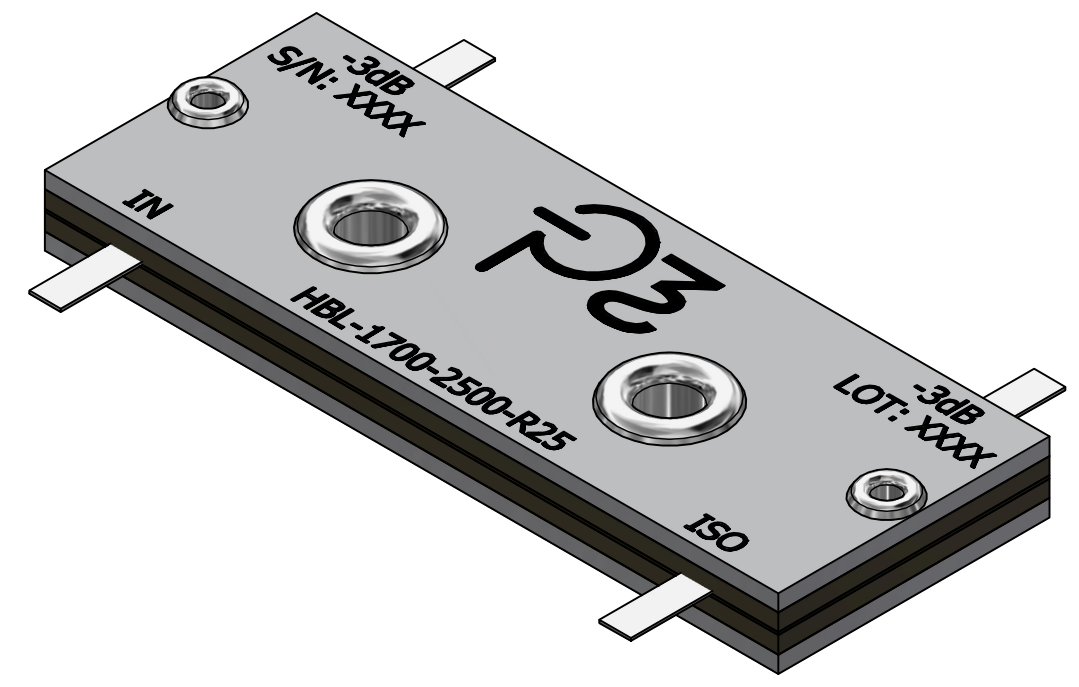
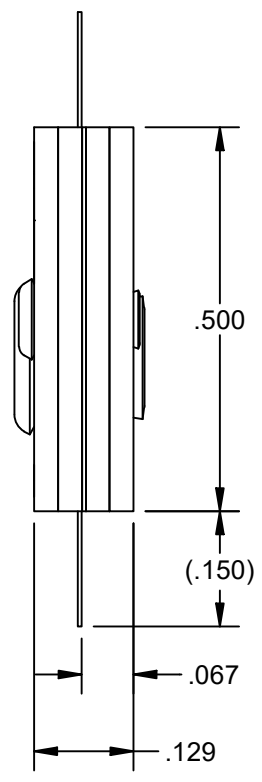
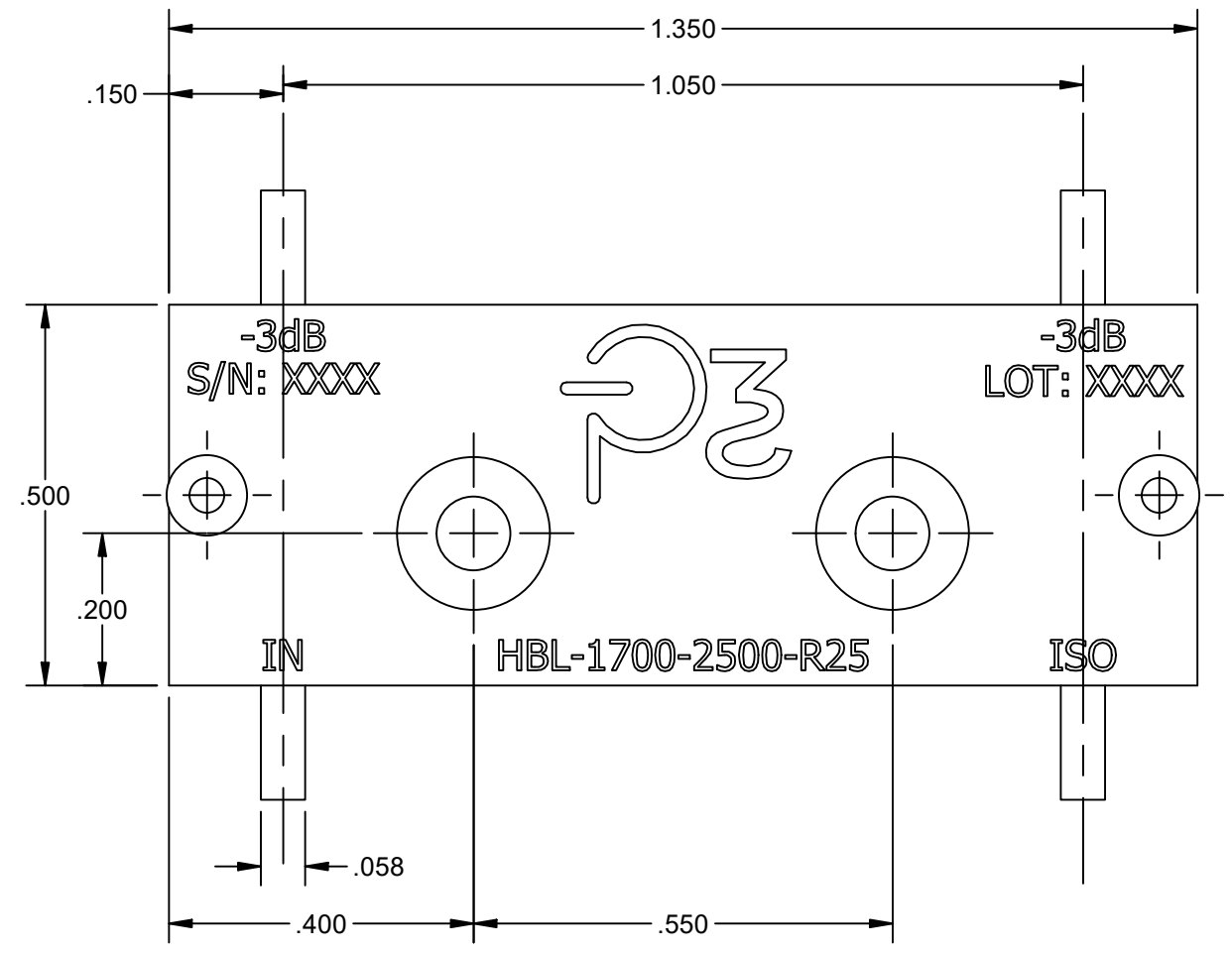


REV	RELEASE	DESCRIPTION	APPROVED	DATE
A	NEW	INITIAL RELEASE	PD	3/6/2019
B	CHANGE	UPDATED FORMAT	JK	7/5/2022




**ELECTRICAL SPECIFICATIONS:**

FREQUENCY:	1.7 - 2.5 GHz
POWER:	250 WATTS CW
INSERTION LOSS:	<0.20 dB
AMPLITUDE BALANCE:	±0.4 dB
PHASE BALANCE:	±5° MAX
VSWR:	<1.25:1
ISOLATION:	>19 dB
OPERATING TEMP:	-55°C TO +85°C
ENVIRONMENT:	SEALED FOR HIGH HUMIDITY APPLICATIONS

**MECHANICAL SPECIFICATIONS:**

MARKING:	LASER MARKED PER MIL-STD-130
FINISH:	CHEM-CONVERSION, CLEAR PER MIL-DTL-55413
SOLDER TABS:	99.99% PURE SILVER, 0.060" WIDE X 0.005" THICK
EYELETS:	STAINLESS STEEL OR BRASS, NICKEL PLATED

 <b>PREFERRED POWER PRODUCTS</b> STUART, FLORIDA 34997	UNLESS OTHERWISE SPECIFIED ALL DIMENSIONS ARE IN INCHES  <b>TOLERANCES:</b> <table> <tr> <td>DECIMALS</td> <td>ANGULAR</td> </tr> <tr> <td>.X ± .1</td> <td>± .5°</td> </tr> <tr> <td>.XX ± .01</td> <td></td> </tr> <tr> <td>.XXX ± .005</td> <td></td> </tr> </table>	DECIMALS	ANGULAR	.X ± .1	± .5°	.XX ± .01		.XXX ± .005		PART NO <b>HBL-1700-2500-R25</b> HYBRID COUPLER, 90° 1.7 - 2.5 GHz 250 WATT	
		DECIMALS	ANGULAR								
.X ± .1	± .5°										
.XX ± .01											
.XXX ± .005											
THIS DRAWING AND ALL CONTENTS HEREIN, ARE THE SOLE, PROPRIETARY PROPERTY OF PREFERRED POWER PRODUCTS, LLC AND MAY NOT BE USED, REPRODUCED OR DISCLOSED WITHOUT EXPRESSED WRITTEN CONSENT.	CHECKED PD 7/5/2022 DRAWN JK 7/5/2022 CAGE CODE 7W5T7	APPROVED PD 7/5/2022 ENGINEER PD 7/5/2022 SCALE N/A	SHEET 1 OF 1								